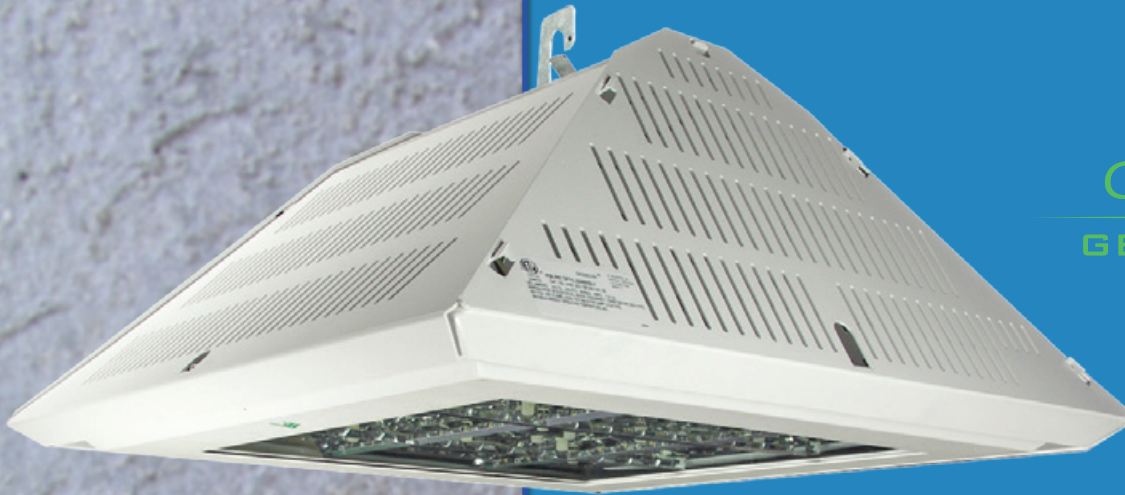


XHB3 LED High Bay Fixture



Crossover[®]
GENERATION 3

Marketing Positioning Statement

The XHB3 LED High Bay fixture delivers the perfect combination of low energy consumption and high lumen output all in an industry leading fixture platform. The XHB3 is an excellent retrofit or new construction choice in place of traditional metal halide or fluorescent fixtures for use in factories, warehouses, distribution centers, cold storage applications and any other indoor application that demands a rugged fixture. The XHB3 – providing light right where you need it.

Leading Selling Features

- ☐ SmartTec™ Control Technology – “Industry First”
- ☐ Low Total Cost of Ownership - Quick Payback
- ☐ Outstanding Uniformity & Visual Comfort
- ☐ Leading Selection of Light Output Options
- ☐ Unparalleled Speed & Ease of Installation
- ☐ Exceptional Reliability in a High Bay Fixture



SmartTec Control Technology - "Industry First"

Thermal Management

LSI proprietary SmartTec heat dissipation system

Fixture temperature lowered automatically when needed until safe operating temperature is reached

Sensors in both the optical unit and driver initiate temperature correction.

Integral Motion (IMS)

Lower light levels activated when target zone is absent of motion for 2 minutes

IMS0 – 0% of power activated (fixture is turned off)

IMS30 – 30% of power activated

Light level gradually ramped down (10 -15 seconds)

Dimming (DIM)

0-10V Dimming enabled with controls by others

Bi-Level Switching (BLS)

Low light level reduced to 30% of maximum drive current via controls by others

Low Total Cost of Ownership – Quick Payback

Annual Energy & Maintenance Savings

\$14,929 savings for (50) XHB3 128 LED fixtures replacing (50) 400W MH

\$11,425 savings for (50) XHB3 176 LED fixtures replacing (50) 400W MH

Payback Analysis

ROI of 2.3 years for XHB3 128 LED

ROI of 3.6 years for XHB3 176 LED

Based upon 24 hour daily operation@ \$.10kWh

Outstanding Uniformity & Visual Comfort

Clear Flat Optical Grade Tempered Glass Lens

Superior TriLume[®] performance & value through sealed lens, precision reflector and industry's best LEDs

Optional Diffused Lens

Maximum Impact Resistance – 4 to 5 times more impact resistance than standard glass

Optical unit is permanently sealed with robotically applied polyurethane

Lumen Output

Range of 14,131 to 26,663 lumens

Lumen outputs changed by varying LED quantities and drive currents

Provides a choice for customer's specific requirements

LIGHT OUTPUT - XHB3 128					
	# of LEDs		Lumens (Nominal)		Watts
			S	AL	
Cool White	350 mA	128	16497	15849	145
	450 mA	128	19073	19298	192
Neutral White	350 mA	128	14131	14453	145
	450 mA	128	17021	17741	192

Unmatched Lighting Performance

Creates a brighter environment at lower light levels

Unmatched lighting performance in a high bay fixture

High efficiency reflector provides exceptional uniformity and vertical illumination without glare

LIGHT OUTPUT - XHB3 176					
	# of LEDs		Lumens (Nominal)		Watts
			S	AL	
Cool White	350 mA	176	21686	21464	197
	450 mA	176	26219	26663	259
Neutral White	350 mA	176	18197	18130	197
	450 mA	176	22346	21669	259

Distribution

Available with symmetric or aisle lighter distribution

Directs light where needed, reduces undesirable light loss

Application layouts are available upon request

LM79 & LM80 reports available

**128 or 176 LED
Array Choices**

XHB3 128 LED array for lower mounting heights (145 watts)
XHB3 176 LED array for higher mounting heights (260
watts)

Provides a choice of using less energy, or
more light output as desired

Select high brightness LEDs feature instant on,
instant restart and no warm-up and flickering, unlike HID
fixtures

Can mix and match arrays throughout facility depending on project requirements



Color Rendering Index

Nominal CRI of 70 facilitates recognition of specific colors of various objects to
meet industry standards

Color Temperature

Cool white (5300K) or neutral white (4100K) provides bright and pleasing
industrial lighting at reduced foot candle levels

Temperature Range

-40°C to 40°C (-40°F to 104°F)

Suitable for use in a wide range of ambient temperatures

Fixture performance is maximized when temperatures remain within these
ranges

Drive Currents

350mA and 450mA available

The perfect combination of low energy consumption and high lumen output

Input Voltage

Universal voltage 120V thru 277V (50/60 Hz input): 347V-480V also available

Unparalleled Speed & Ease of Installation

Mounting

Very light fixture weights as low as 19 lbs., a third less weight than conventional
high bay fixtures

Adjustable die formed galvanized steel or cast hook for hanging

Choice of pendant or hook mounting

Maintenance-Free

Once installed, XHB3 is virtually maintenance free

Quick removable side panel for ease in access to wiring compartment and
electrical components

Exceptional Reliability in a High Bay Fixture

**Environmentally
Responsible**

With exceptional "green" technology, luminaire is RoHS compliant

Greater than 80% recyclable by weight

Housing	<p>Vented die-formed aluminum housing design resists birds and accumulation of dust and debris</p> <p>Design is resistant to shock and vibration</p> <p>Further durability achieved through usage of tempered glass lens as well as EPDM or silicone rubber seals</p>
Optical Unit	<p>Clear tempered glass lens or optional diffused lens to reduce visibility of diodes where desired</p> <p>Water-resistant, sealed to an IP67 rating</p>
Reflector	<p>High performance, die-formed specular aluminum</p> <p>95% reflective aluminum has a mirror-like surface and is one of the two most reflective materials in the world</p>
Pressure Stabilizing Vent/Breather	<p>Equalizes pressure in optical unit preventing pressure buildup due to ambient temperatures changes, protecting gaskets and seals over the life of the fixture</p>
Finish/Colors	<p>LSI's DuraGrip[®] polyester powder coat – resists corrosion and is scratch and ding resistant</p> <p>Standard color is white</p>
Long-Life	<p>Up to 100,000 hours of expected life equates to 11.4 years burning 24/7</p> <p>3X the life expectancy of linear fluorescent and 5X that of HID</p> <p>Once installed, XHB3 is virtually maintenance free</p>
Protection	<p>IP67 on optical unit provides total dust ingress protection, temporary liquid submersion protection</p>
Surge Protector	<p>Meets IEEE C62.41.2-2002, Scenario 1, Location Category C</p> <p>Prevents damage to fixture due to unexpected “surge” or “swell” in AC line voltage</p>
Warranty	<p>Limited 5-year warranty</p>
Accessories	<p>Wire Guards and Polycarbonate Shields are available for use in protection of optics</p>
DLC	<p>Selected versions of this product are on the DLC Qualified Products List (QPL). Consult the LSI website or the DLC QPL website at www.designlights.org for specific products listed.</p>



(513)793-3200
www.lsi-industries.com